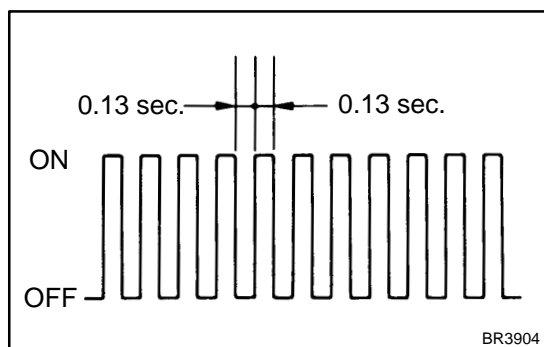
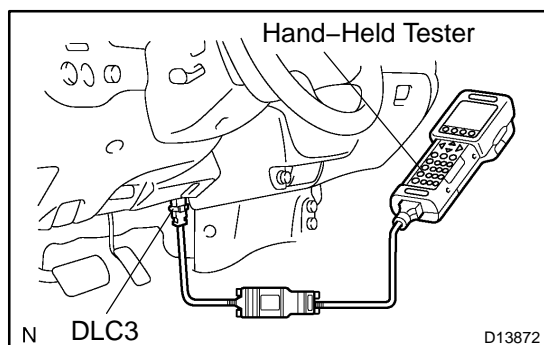


CHECK MODE PROCEDURE

HINT:

Hand-held tester only:

Check mode has a higher sensitivity to detect malfunctions and can detect malfunctions that normal mode cannot detect. Check mode can also detect all the malfunctions that normal mode can detect.



1. CHECK MODE PROCEDURE

- (a) Make sure that the items below are true.
 - (1) Battery positive voltage 11 V or more
 - (2) Throttle valve fully closed
 - (3) Transmission in the P or N position
 - (4) A/C switched OFF
- (b) Turn the ignition switch OFF.
- (c) Connect the hand-held tester to the DLC3.
- (d) Turn the ignition switch ON.
- (e) Change the ECM to check mode with the hand-held tester. Enter the following menus: DIAGNOSIS / ENHANCED OBD II / CHECK MODE. Make sure the MIL flashes as shown in the illustration.

NOTICE:

All DTCs and freeze frame data recorded will be erased if:
1) the hand-held tester is used to change the ECM from normal mode to check mode or vice-versa; or 2) during check mode, the ignition switch is turned from ON to ACC or OFF.

- (f) Start the engine. The MIL should turn off after the engine starts.
- (g) Simulate the conditions of the malfunction described by the customer.
- (h) After simulating the malfunction conditions, use the hand-held tester diagnosis selector to check the DTC, freeze frame data and other data.
- (i) After checking the DTC, inspect the applicable circuit.

2. CLEAR DTC (Using the hand-held tester)

- (a) Connect the OBD II scan tool or the hand-held tester to the DLC3.
- (b) Turn the ignition switch ON.
- (c) Erase DTCs and freeze frame data with the OBD II scan tool (complying with SAE J1978) or the hand-held tester. For the hand-held tester: 1) enter the following menus: DIAGNOSIS / ENHANCED OBD II / DTC INFO / CLEAR CODES; and 2) press YES. For the OBD II scan tool, see its instruction manual.

3. CLEAR DTC (Not using the hand-held tester)

- (a) Remove the EFI No. 1 and ETCS fuses from the engine room J/B for more than 60 seconds, or disconnect the battery terminal for more than 60 seconds.

After disconnecting the battery terminal, perform the "INITIALIZE" procedure.